

**INSTALLATION AND CLEANING INSTRUCTIONS
KAWASAKI VULCAN 900
MODEL# 429 & S429**

Item	Qty
8 x 35 mm Short Hex Spool Bolt Assembly	4
17 x 21 x 8mm Aluminum Spacer	4
8 x 40 mm Hex Cap Screw	4
8 x .125 Locknut	4
$\frac{1}{4}$ - 20 x 1 $\frac{3}{4}$ " Hex Cap Screw	4
$\frac{1}{4}$ - 20 Locknut	4
1 $\frac{1}{2}$ " Rubber Bumpers	8
$\frac{7}{8}$ x 1 x $\frac{1}{4}$ Aluminum Spacers	4
6 x 25 mm Pan Phil Machine Screw	4
6 mm Locknut	4
$\frac{1}{4}$ " Flat washer	4
Silicone Lubricant	1

SADDLEBAG INSTALLATION

1. Refer to figure 1. Start on the right side of the motorcycle.
2. Remove the two 8mm button head screws and factory spacer from the right fender strut cover. Remove cover and place to the side for later.
3. Remove the front bolt from the fender strut and replace with an 8 x 40 mm hex cap screw. Remove the rear bolt from the fender strut and replace with an 8 x 40 mm hex cap screw. Replace bolts one at a time.
4. Slide support bracket behind fender and frame, line up mounting holes to the bolts inserted in previous step. And secure with the 8 x .125 locknut.
5. Refer to figure 2. Place 1 $\frac{1}{2}$ " rubber bumpers and the $\frac{7}{8}$ " x 1" x $\frac{1}{4}$ " aluminum spacers on the bracket and secure with the $\frac{1}{4}$ - 20 x 1 $\frac{3}{4}$ " hex cap screw and $\frac{1}{4}$ - 20 lock nuts. Do not over tighten.
6. Attach the fender strut cover using the factory washer, 17 x 21 x 8mm aluminum spacer, and the 8 x 35 mm hex spool bolt assembly.
7. Attach the remaining 1 $\frac{1}{2}$ " rubber bumpers to the saddle bags using a 6x25mm pan phil machine screw and 6mm washer and locknut. Do not over tighten.

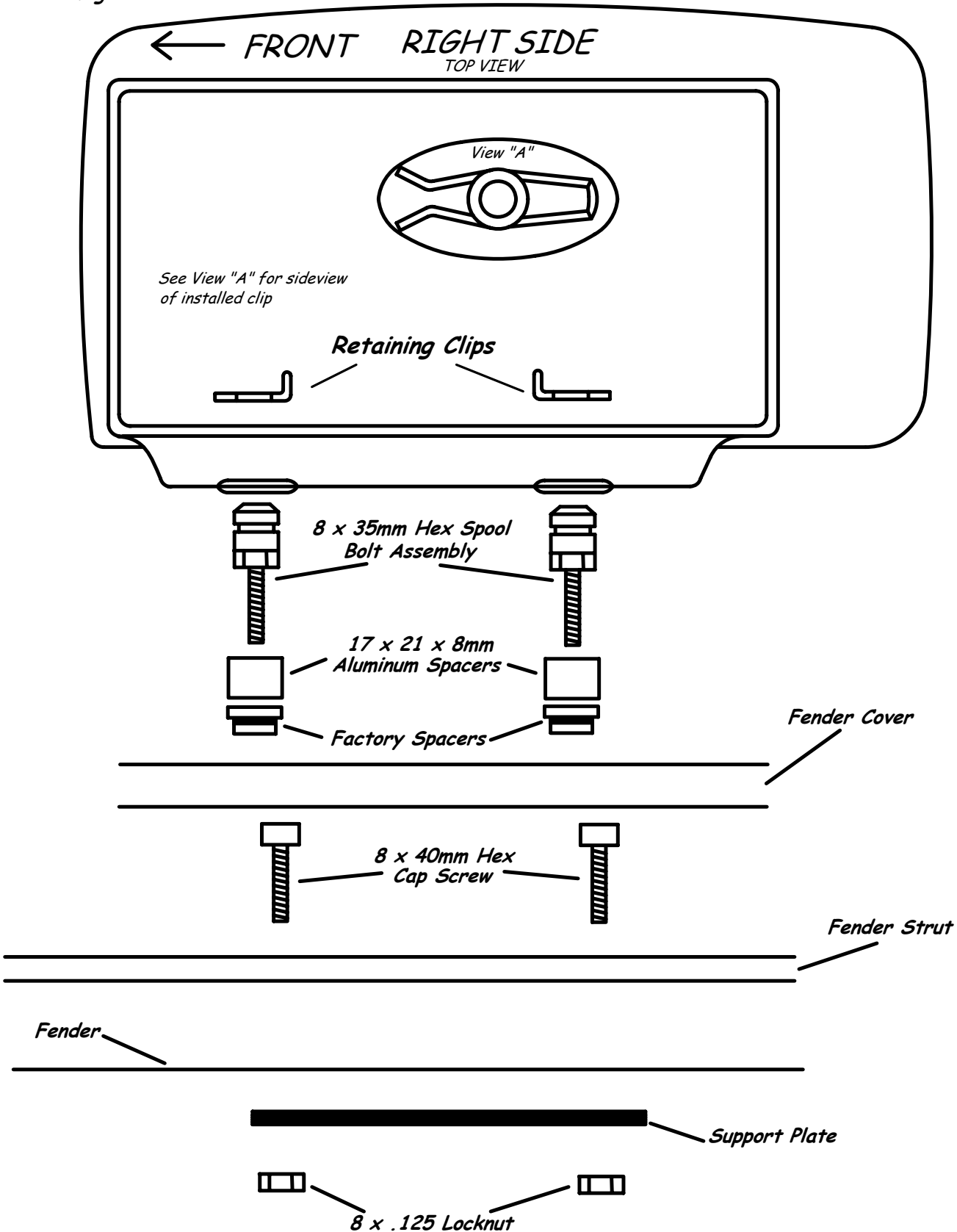
8. Repeat procedure on other side.
9. Apply a small amount of silicone lubricant to rubber mounting points, place saddlebag over spool assembly on fender strut and lock into place as shown in figure #1 view "A" with retaining clips. Check to ensure clips are in groove of mounting spool.

SADDLEBAG CARE INSTRUCTIONS

- Do not exceed 20 lbs. per saddlebag this includes sitting or standing on bags, it is a common occurrence for a non-rider to attempt to sit on bags, this also may void warranty.
- Periodically, apply a small amount of silicone lubrication to rubber mounting points. Saddlebags will be easier to mount and remove.
- Remove grease, oil or mud with mild detergent and water. For fast touch-up, *Windex* or *Turtle Wax F-21* will restore original luster. The use of any other chemicals may discolor the saddlebags.
- Whenever possible, release locks on saddlebag lids to allow the gaskets to expand during storage.
- If you use bags to ice down drinks, later remove bags, drain water and blot up excess water. The foam interior lining is closed-cell foam and does not retain water. Leave lids open until interiors are dry.
- Use white *Scotch Brite* scour pad (ultra-fine, only) to remove scratches & shiny spots and restore luster. This can be purchased at an automotive supply store.
- When locking or unlocking saddlebags, place one hand on top of bag near lock and apply a moderate amount of pressure while turning the key. This compresses the weather-seal enabling the locking mechanism to turn freely.
- Always inspect to verify each of the saddlebag mounting clips on inside of bag is properly installed when mounting bags. Clips fit into groove on mounting spool. Failure to perform this correctly can cause severe damage and may void warranty.

Installation Instructions Kawasaki Vulcan 900 Model # 429 & s429

Figure 1



Kawasaki Vulcan 900 Model # 429 & 429

Figure 2

